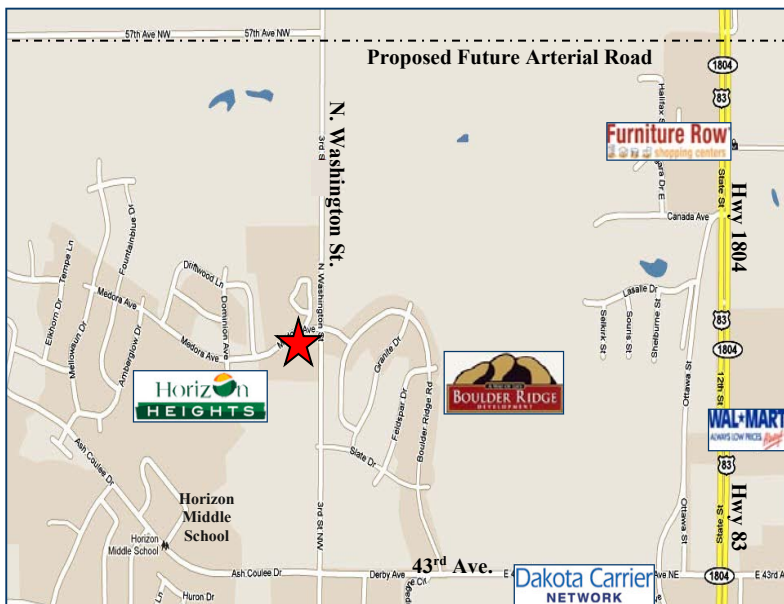


# Land for Sale



Unimproved Land • 201 Medora Avenue, Bismarck, ND 58503



## Property Highlights

- Lot Size: 221,513 sq ft
- Zoning: RT Residential Light Commercial
- Located in the NW Bismarck Area of New Home Growth



Building relationships since 1905  
 301 East Thayer Ave • Bismarck, ND 58501  
 phone 701.221.2222 • fax 701.221.2290  
[www.duemelands.com](http://www.duemelands.com)

**April Eide**  
 Senior Associate  
 direct 701.223.5863  
[april@duemelands.com](mailto:april@duemelands.com)

**Aaron Stenberg, CCIM**  
 Broker Associate/Partner  
 direct 701.221.2100  
[aaron@duemelands.com](mailto:aaron@duemelands.com)

## Property Details

201 Medora Avenue

<b>Location:</b>	201 Medora Avenue, Bismarck, ND 58503
<b>Parcel ID:</b>	1515-002-001
<b>Legal Description:</b>	Lot 1, Block 2, Good Shepherd North Addition
<b>Lot Size:</b>	221,513 sq ft (5.09 acres)
<b>Zoning:</b>	RT Residential Light Commercial
<b>2010 Estimated Taxes:</b>	\$4,228.62
<b>Estimated Specials:</b>	\$86,135.02 Balance, \$13,330.05 Annual Installment

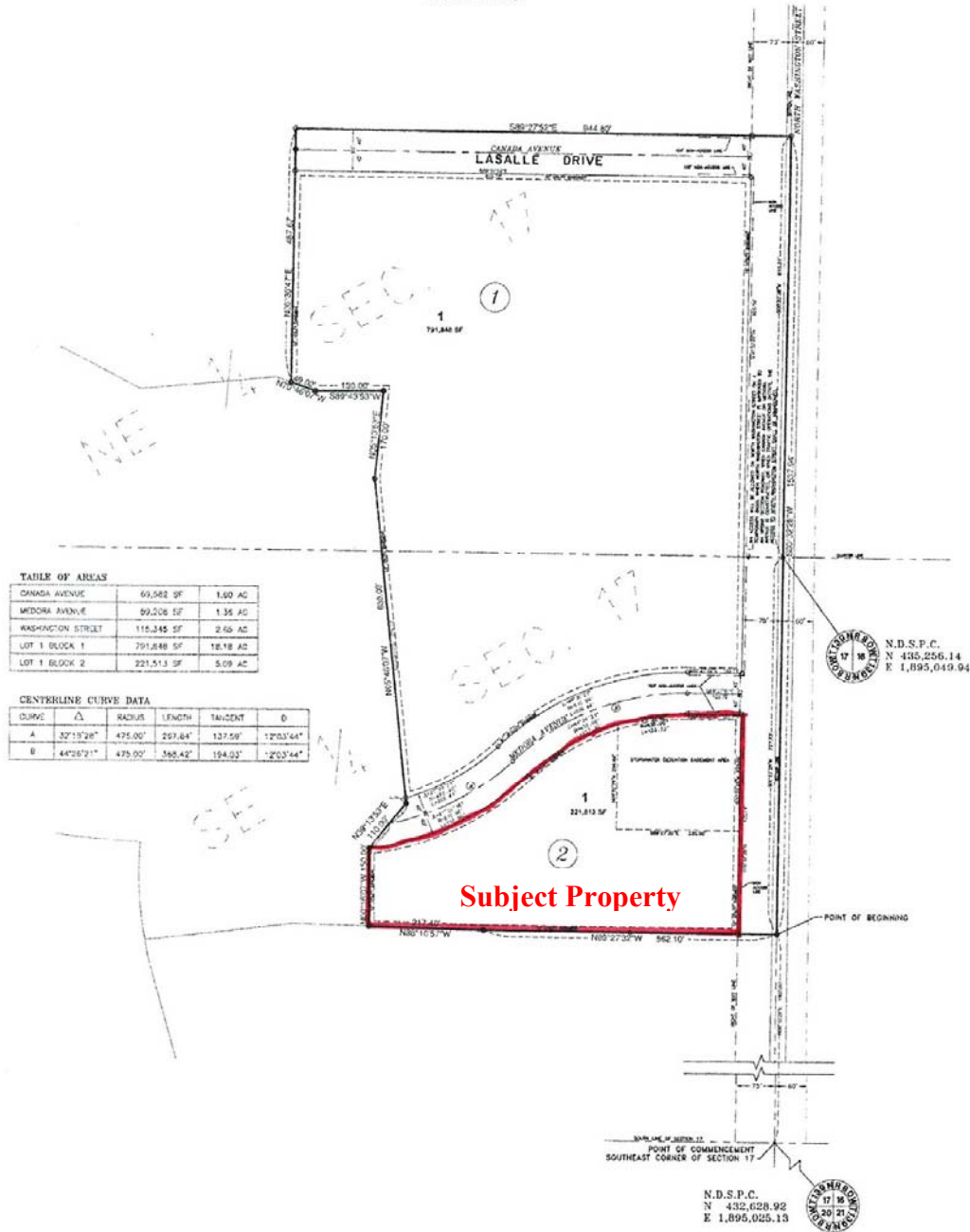


*Building relationships since 1905*  
301 East Thayer Ave • Bismarck, ND 58501  
phone 701.221.2222 • fax 701.221.2290  
[www.duemelands.com](http://www.duemelands.com)

**April Eide**  
*Senior Associate*  
direct 701.223.5863  
[april@duemelands.com](mailto:april@duemelands.com)

**Aaron Stenberg, CCIM**  
*Broker Associate/Partner*  
direct 701.221.2100  
[aaron@duemelands.com](mailto:aaron@duemelands.com)

GOOD SHEPHERD NORTH ADDITION  
 PART OF E 1/2 OF  
 SECTION 17 - T139N - R80W  
 BISMARCK, NORTH DAKOTA  
 JUNE 2005



Building relationships since 1905  
 301 East Thayer Ave • Bismarck, ND 58501  
 phone 701.221.2222 • fax 701.221.2290  
[www.duemelands.com](http://www.duemelands.com)

**April Eide**  
 Senior Associate  
 direct 701.223.5863  
[april@duemelands.com](mailto:april@duemelands.com)

**Aaron Stenberg, CCIM**  
 Broker Associate/Partner  
 direct 701.221.2100  
[aaron@duemelands.com](mailto:aaron@duemelands.com)