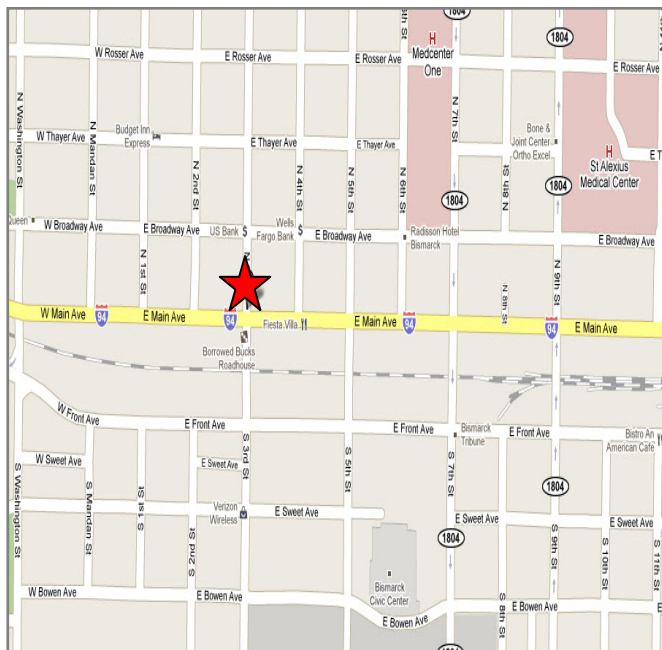


Property for Sale



Downtown Office Building • 110 N. 3rd Street, Bismarck, ND 58501



Property Highlights

- List Price: \$169,900
- Year Built: 1940, Remodeled: 1997
- New Roof: 2008, New Furnace: 2006
- Building Size: 2,500 SF
- Lot Size: 1,875 SF
- Zoning: DC Core Zoning District/Renaissance Zone
- Parking: On-Site
- Features: Spacious Reception Area
Private Offices with Windows
Large Conference/Break Room
Built-in Cabinets Throughout
Additional Storage
- Located in the Heart of Downtown Bismarck
- Highly Visible



Building relationships since 1905
301 East Thayer Ave • Bismarck, ND 58501
phone 701.221.2222 • fax 701.221.2290
www.duemelands.com

April Eide
Senior Associate
direct 701.223.5863
april@duemelands.com

Aaron Stenberg, CCIM
Broker Associate/Partner
direct 701.221.2100
aaron@duemelands.com

Property Details

Downtown Office Building

Location:	110 N. 3 rd Street, Bismarck, ND 58501
Parcel ID:	0001-052-015
Legal Description:	N 25 Ft of L 7-9, Block 52, Original Plat
Building Size:	2,500 SF
Lot Size:	1,875 SF
Zoning:	DC Core Zoning District
Renaissance Zone:	Located in Downtown Renaissance Zone with Special Incentives Available
Parking:	On-Site
Year Built:	1940
Remodeled:	1997
2010 Estimated Taxes:	\$3,353.05
Specials:	\$2,080.10 Balance, \$442.97 Annual Installment
Building Attributes:	Large Reception Area Private Offices with Windows Large Conference/Break Room Built-in Cabinets Throughout Additional Storage New Roof in 2008 New Furnace in 2006
Potential Uses:	General Office, Medical Office, Law Office, Nonprofit Association



Building relationships since 1905
301 East Thayer Ave • Bismarck, ND 58501
phone 701.221.2222 • fax 701.221.2290
www.duemelands.com

April Eide
Senior Associate
direct 701.223.5863
april@duemelands.com

Aaron Stenberg, CCIM
Broker Associate/Partner
direct 701.221.2100
aaron@duemelands.com

Interior Pictures

Downtown Office Building



Building relationships since 1905
301 East Thayer Ave • Bismarck, ND 58501
phone 701.221.2222 • fax 701.221.2290
www.duemelands.com

April Eide
Senior Associate
direct 701.223.5863
april@duemelands.com

Aaron Stenberg, CCIM
Broker Associate/Partner
direct 701.221.2100
aaron@duemelands.com

Exterior Pictures

Downtown Office Building



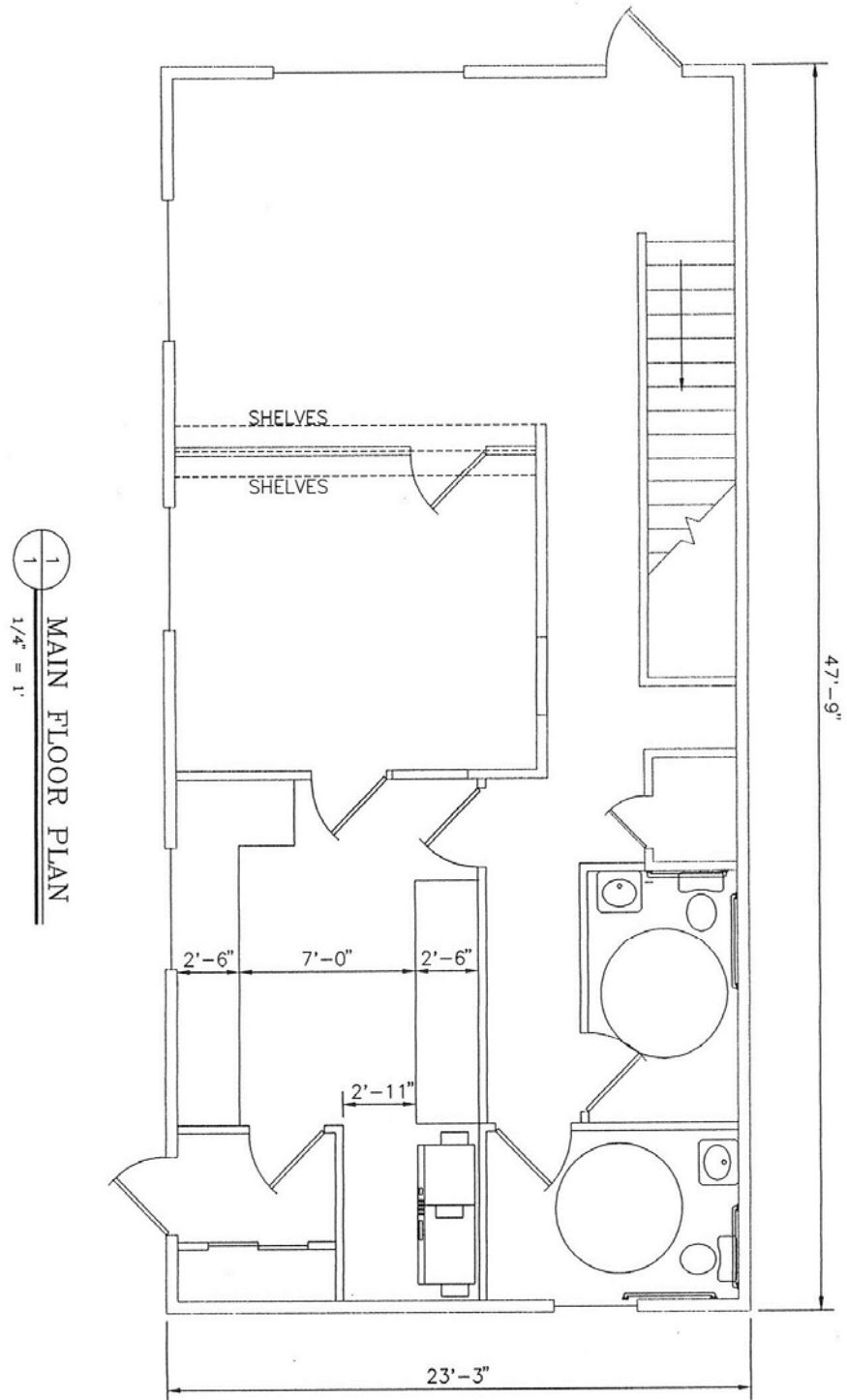
Building relationships since 1905
301 East Thayer Ave • Bismarck, ND 58501
phone 701.221.2222 • fax 701.221.2290
www.duemelands.com

April Eide
Senior Associate
direct 701.223.5863
april@duemelands.com

Aaron Stenberg, CCIM
Broker Associate/Partner
direct 701.221.2100
aaron@duemelands.com

Main Floor Plan

Downtown Office Building



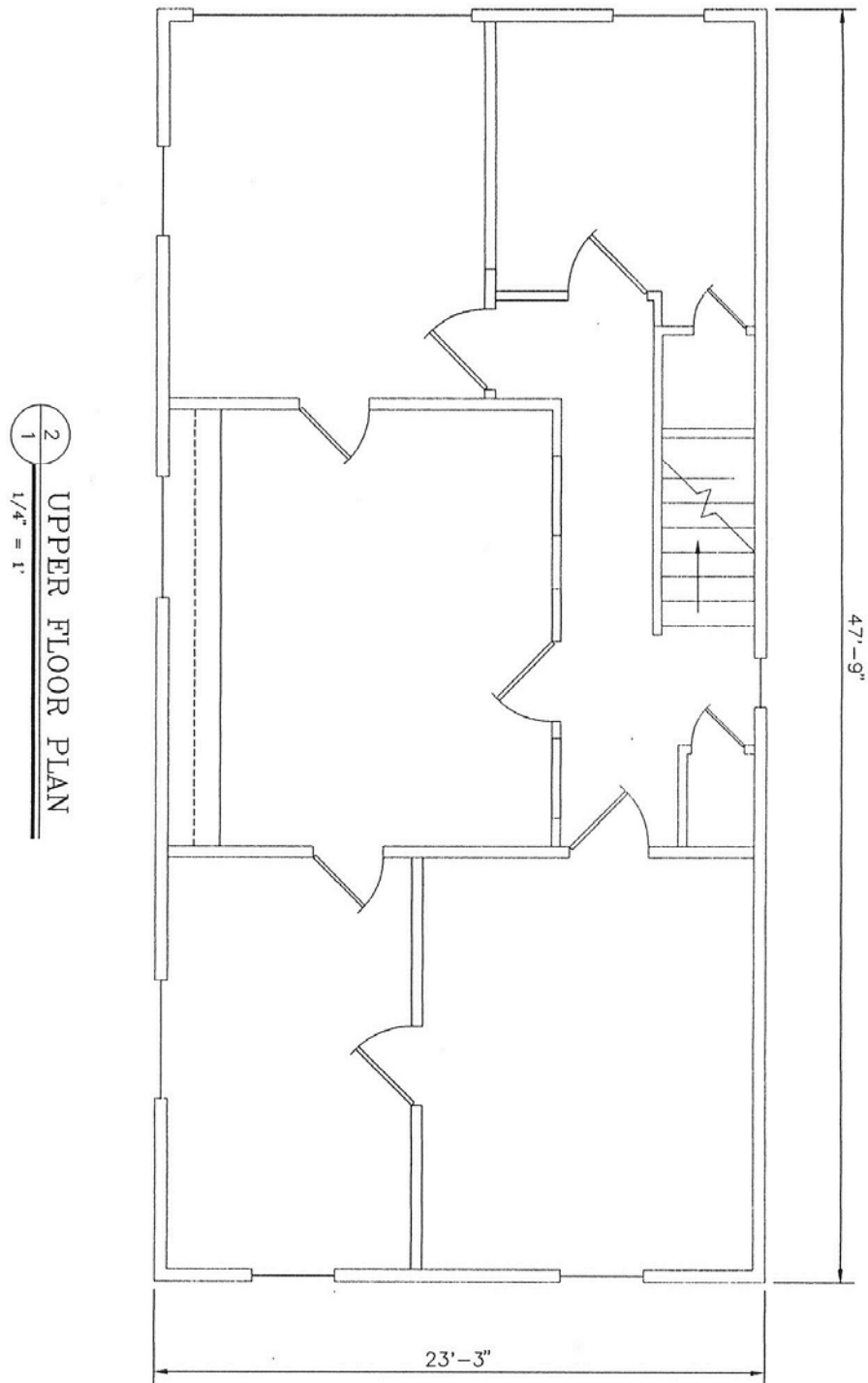
Building relationships since 1905
301 East Thayer Ave • Bismarck, ND 58501
phone 701.221.2222 • fax 701.221.2290
www.duemelands.com

April Eide
Senior Associate
direct 701.223.5863
april@duemelands.com

Aaron Stenberg, CCIM
Broker Associate/Partner
direct 701.221.2100
aaron@duemelands.com

Upper Floor Plan

Downtown Office Building



Building relationships since 1905
301 East Thayer Ave • Bismarck, ND 58501
phone 701.221.2222 • fax 701.221.2290
www.duemelands.com

April Eide
Senior Associate
direct 701.223.5863
april@duemelands.com

Aaron Stenberg, CCIM
Broker Associate/Partner
direct 701.221.2100
aaron@duemelands.com