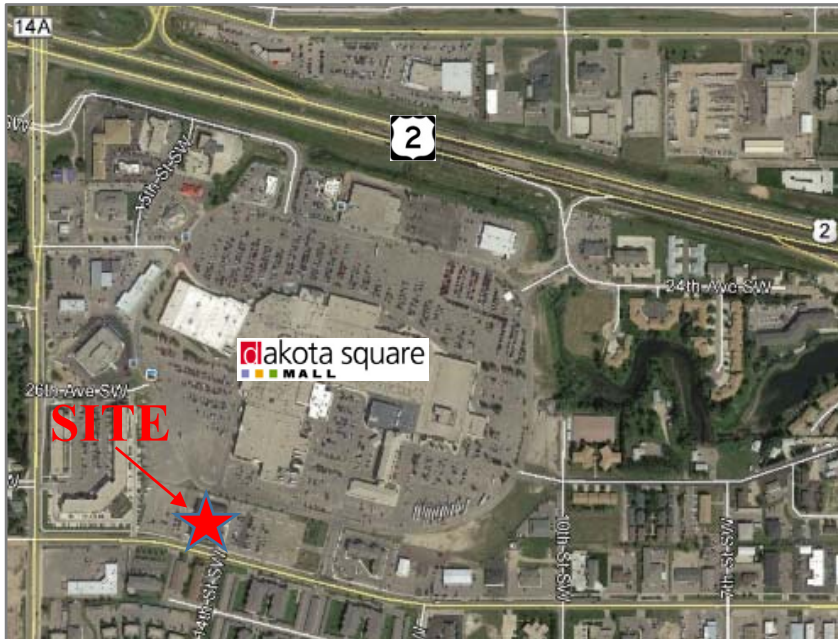


Property for Lease



1400 31st Avenue SW • Minot, ND 58701



Property Highlights

- Lease rate: Negotiable
- Building size: 11,619 sq ft
- Immediately available
- Professional/medical office space



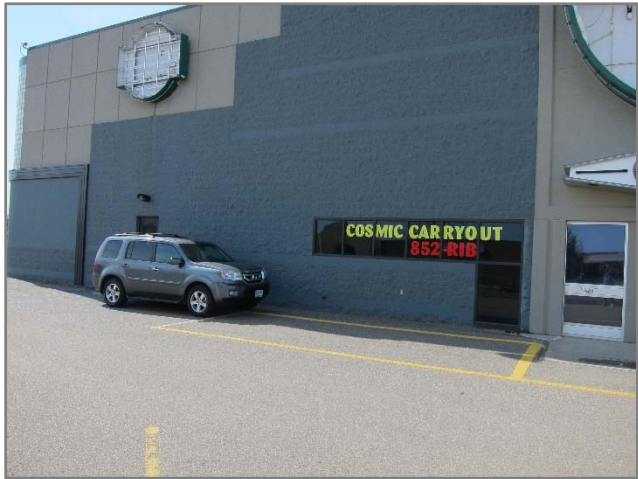
Duemelands Commercial Real Estate
301 East Thayer Ave • Bismarck, ND 58501
phone 701.221.2222 • fax 701.221.2290
www.duemelands.com

Jill Duemeland, CCIM
CEO & President
direct 701.221.9033
jill@duemelands.com

April Eide, CCIM
VP of Brokerage
direct 701.223.5863
april@duemelands.com

→ Pictures

Office Space



Duemelands Commercial Real Estate
301 East Thayer Ave • Bismarck, ND 58501
phone 701.221.2222 • fax 701.221.2290
www.duemelands.com

Jill Duemeland, CCIM
CEO & President
direct 701.221.9033
jill@duemelands.com

April Eide, CCIM
VP of Brokerage
direct 701.223.5863
april@duemelands.com

Co-Tenant Pictures

Office Space



Duemelands Commercial Real Estate
301 East Thayer Ave • Bismarck, ND 58501
phone 701.221.2222 • fax 701.221.2290
www.duemelands.com

Jill Duemeland, CCIM
CEO & President
direct 701.221.9033
jill@duemelands.com

April Eide, CCIM
VP of Brokerage
direct 701.223.5863
april@duemelands.com