

Commercial Lot for Sale

B3, Interchange 11th Addition - Minot, ND



Sale Price: \$909,857

- ◆ \$5.00 psf

Property Information

- ◆ 4.18 acres (181,971 sf)
- ◆ Zoned C2 - General Commercial
- ◆ Block 3, Interchange 11th Addition
- ◆ Parcel # MI36.917.030.0000

Location Information

- ◆ Visibility from US Highway 2
- ◆ Close to Menards
- ◆ Turn lanes onto 6th Street from both directions on Highway 2



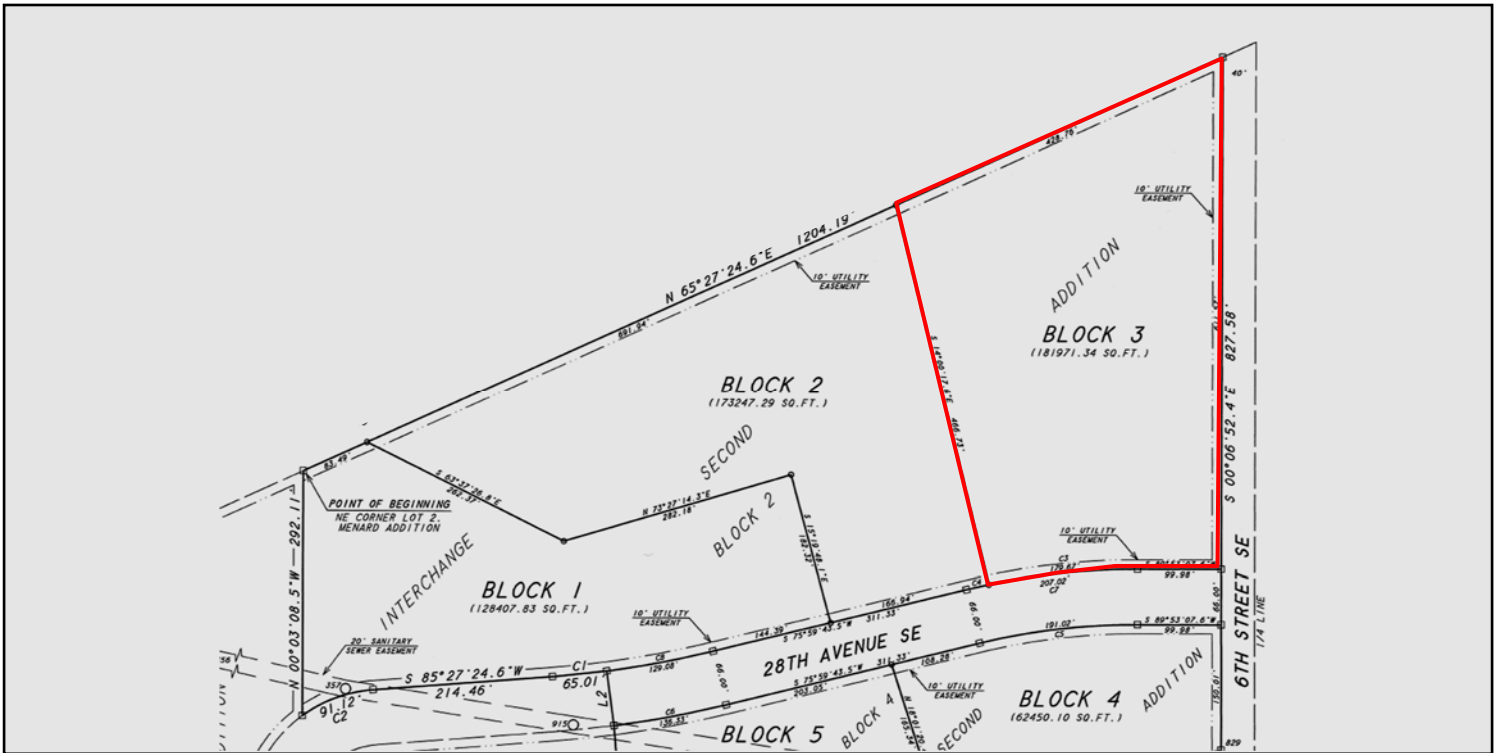
Duemelands Commercial Real Estate
301 E. Thayer Avenue - Bismarck, ND 58501
Phone: (701) 221-2222
www.duemelands.com

Jill Duemeland, CCIM
CEO & President
Phone: 701.221.9033
jill@duemelands.com

April Eide, CCIM
Vice President of Brokerage
Direct: 701.223.5863
april@duemelands.com

Property Plat

Commercial Lot



Duemelands Commercial Real Estate
 301 E. Thayer Avenue - Bismarck, ND 58501
 Phone: (701) 221-2222
www.duemelands.com

Jill Duemeland, CCIM
 CEO & President
 Phone: 701.221.9033
jill@duemelands.com

April Eide, CCIM
 Vice President of Brokerage
 Direct: 701.223.5863
april@duemelands.com