

# Retail Space for Lease



## Pinehurst Square East - Bismarck, North Dakota



### Call for Terms and Lease Rates

#### Available Suites

- ◆ Suite 116 - 2,058 sf
- ◆ Suite 128 - 1,675 sf
- ◆ Suite 134 - 1,610 sf
- ◆ Suite 913 - 2,843 sf

#### Property Information

- ◆ \$4.70 psf CAM
- ◆ Located in the Pinehurst Square Shopping Center
- ◆ 16,605 vpd on W Century Avenue (ND DOT 2019)



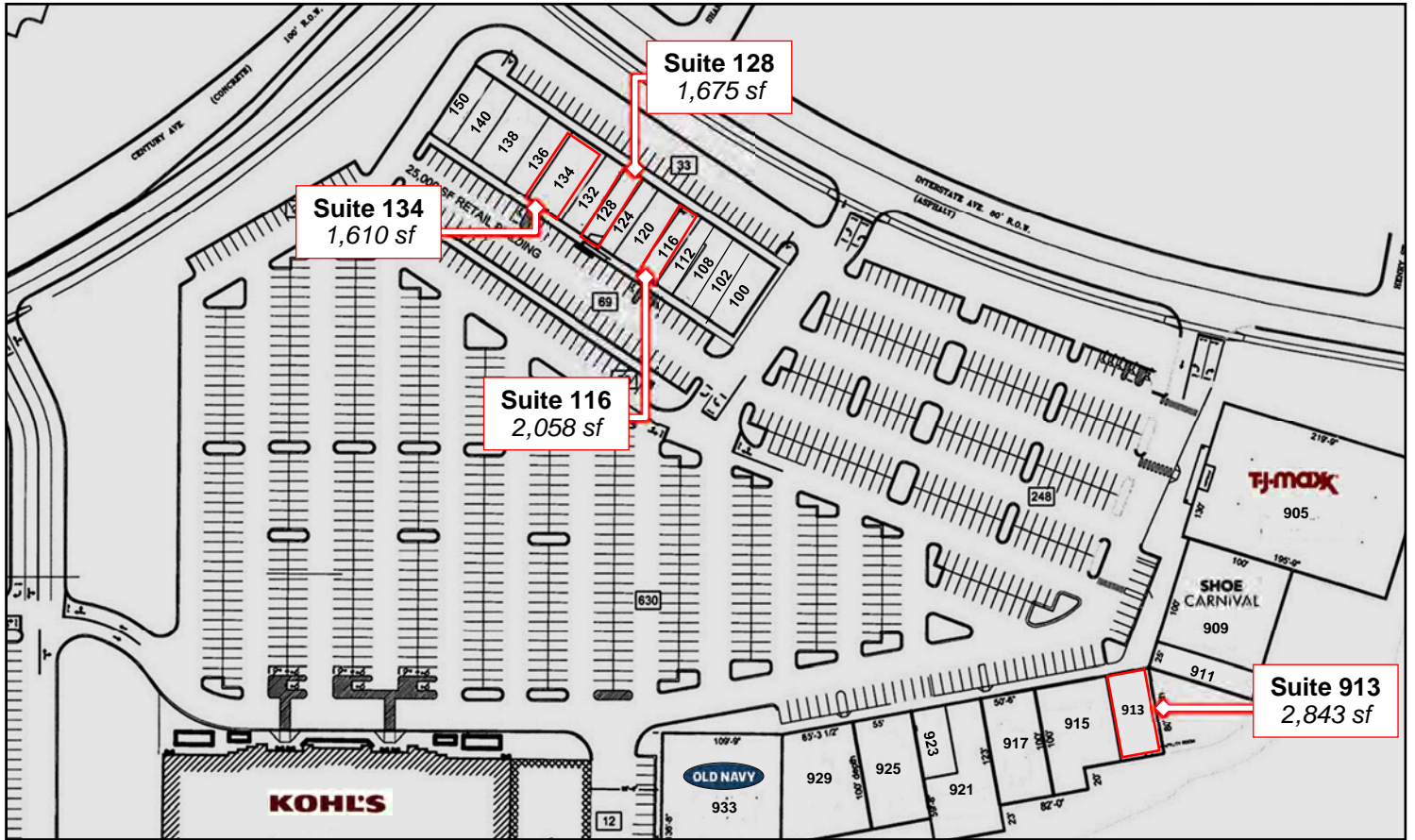
**Duemelands Commercial Real Estate**  
301 E. Thayer Avenue - Bismarck, ND 58501  
Phone: (701) 221-2222  
[www.duemelands.com](http://www.duemelands.com)

**Jill Duemeland, CCIM**  
CEO & President  
Phone: 701.221.9033  
[jill@duemelands.com](mailto:jill@duemelands.com)

**April Eide, CCIM**  
Vice President of Brokerage  
Direct: 701.223.5863  
[april@duemelands.com](mailto:april@duemelands.com)

# Suite Map & List

Retail Space for Lease



Suite	Tenant	SF
100	Evolve Salon & Spa	2,875
102	SolidCore	2,000
108	Blue Apple Walk-in Clinic	1,350
112	Nardello's	1,513
116	<b>Available</b>	2,058
120	Brennon Rossman Insurance	1,288
124	Classy Nails	1,425
128	<b>Available</b>	1,675
132	Martinson Family Dental	3,000
134	<b>Available</b>	1,610
136	Edible Arrangements	1,275
138	Jimmy John's	1,333
140	Five Guy's Burgers & Fries	2,300

Suite	Tenant	SF
150	Sally Beauty	1,500
905	TJ Maxx	26,000
909	Shoe Carnival	10,000
911	Northern Lights Physical Therapy	2,450
913	<b>Available</b>	2,843
915	Kobe's Japanese Cuisine	6,245
917	CHI Urgent Care	5,050
921	CHI Urgent Care	4,651
923	Crystal Rock Healing Products	3,297
925	Grifols	5,500
929	Grifols	7,500
933	Old Navy	15,364



**Duemelands Commercial Real Estate**  
 301 E. Thayer Avenue - Bismarck, ND 58501  
 Phone: (701) 221-2222  
[www.duemelands.com](http://www.duemelands.com)

**Jill Duemeland, CCIM**  
 CEO & President  
 Phone: 701.221.9033  
[jill@duemelands.com](mailto:jill@duemelands.com)

**April Eide, CCIM**  
 Vice President of Brokerage  
 Direct: 701.223.5863  
[april@duemelands.com](mailto:april@duemelands.com)

# Suite 116

Retail Space for Lease



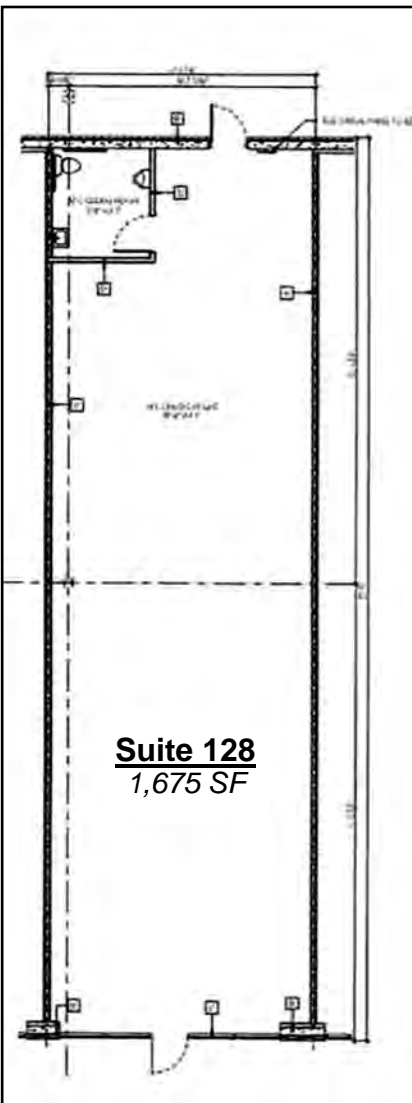
**Duemelands Commercial Real Estate**  
301 E. Thayer Avenue - Bismarck, ND 58501  
Phone: (701) 221-2222  
[www.duemelands.com](http://www.duemelands.com)

**Jill Duemeland, CCIM**  
CEO & President  
Phone: 701.221.9033  
[jill@duemelands.com](mailto:jill@duemelands.com)

**April Eide, CCIM**  
Vice President of Brokerage  
Direct: 701.223.5863  
[april@duemelands.com](mailto:april@duemelands.com)

# Suite 128

Retail Space for Lease



**Duemelands Commercial Real Estate**  
301 E. Thayer Avenue - Bismarck, ND 58501  
Phone: (701) 221-2222  
[www.duemelands.com](http://www.duemelands.com)

**Jill Duemeland, CCIM**  
CEO & President  
Phone: 701.221.9033  
[jill@duemelands.com](mailto:jill@duemelands.com)

**April Eide, CCIM**  
Vice President of Brokerage  
Direct: 701.223.5863  
[april@duemelands.com](mailto:april@duemelands.com)

# Suite 134

Retail Space for Lease



**Duemelands Commercial Real Estate**  
301 E. Thayer Avenue - Bismarck, ND 58501  
Phone: (701) 221-2222  
[www.duemelands.com](http://www.duemelands.com)

**Jill Duemeland, CCIM**  
CEO & President  
Phone: 701.221.9033  
[jill@duemelands.com](mailto:jill@duemelands.com)

**April Eide, CCIM**  
Vice President of Brokerage  
Direct: 701.223.5863  
[april@duemelands.com](mailto:april@duemelands.com)

# Suite 913

Retail Space for Lease



**Duemelands Commercial Real Estate**  
301 E. Thayer Avenue - Bismarck, ND 58501  
Phone: (701) 221-2222  
[www.duemelands.com](http://www.duemelands.com)

**Jill Duemeland, CCIM**  
CEO & President  
Phone: 701.221.9033  
[jill@duemelands.com](mailto:jill@duemelands.com)

**April Eide, CCIM**  
Vice President of Brokerage  
Direct: 701.223.5863  
[april@duemelands.com](mailto:april@duemelands.com)