

Turn-Key Office Space for Lease



DUEMELANDS
COMMERCIAL REAL ESTATE

520 64th Street SE - Minot, North Dakota



Lease Rate: \$12.00 psf

Property Information

- ◆ 2-story turn-key office space
 - ◇ 12,750 sf available
 - ◇ 6,375 sf per floor (85' x 75')
- ◆ Move-in ready
- ◆ Private offices, conference room, break room, reception area with mail room, & training area
- ◆ Built in 2009
- ◆ Warehouse & yard space available

Area Information

- ◆ Located east of Minot off Highway 2
- ◆ Easy wayfinding



Duemelands Commercial Real Estate
301 E. Thayer Avenue - Bismarck, ND 58501
Phone: (701) 221-2222
www.duemelands.com

Jill Duemeland, CCIM
CEO & President
Phone: 701.221.9033
jill@duemelands.com

April Eide, CCIM
Vice President of Brokerage
Direct: 701.223.5863
april@duemelands.com

Interior Pictures

Turn-key Office Space



Duemelands Commercial Real Estate
301 E. Thayer Avenue - Bismarck, ND 58501
Phone: (701) 221-2222
www.duemelands.com

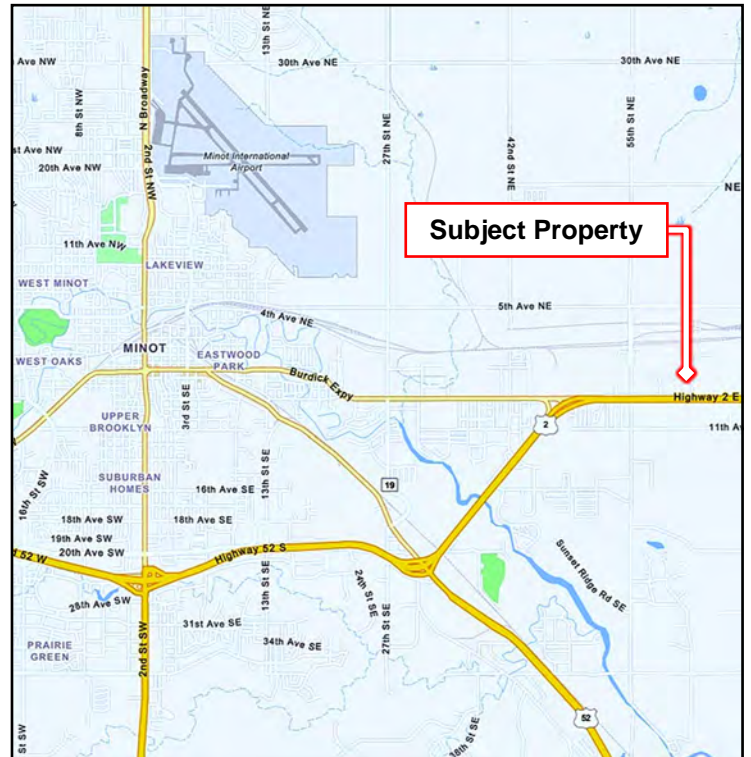
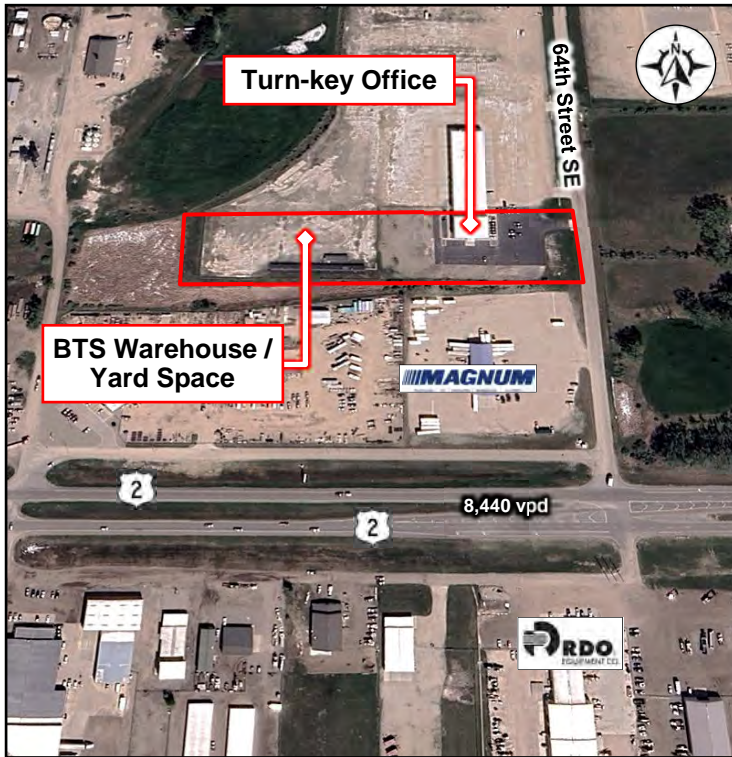
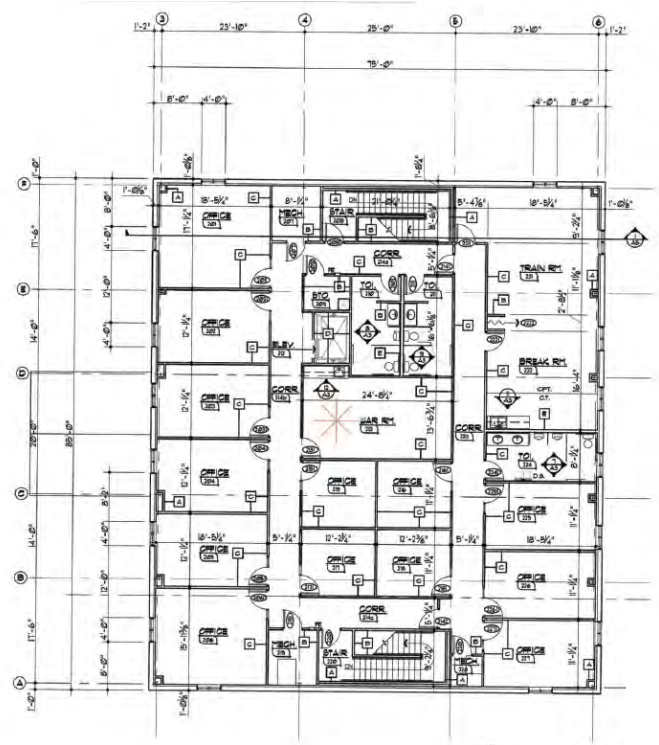
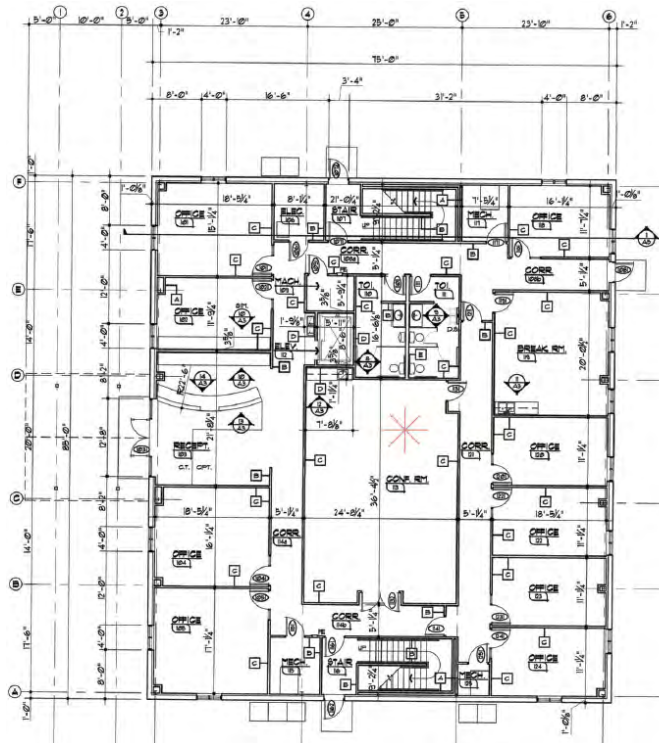
Jill Duemeland, CCIM
CEO & President
Phone: 701.221.9033
jill@duemelands.com

April Eide, CCIM
Vice President of Brokerage
Direct: 701.223.5863
april@duemelands.com

The data and information contained herein, while not guaranteed, have been obtained from sources we believe to be reliable. We make no warranties, whether expressed or implied, as to the accuracy or completeness of the information. Any reference to square footage and monetary values are considered approximations. Buyer or Lessee should conduct their own analysis and rely on their own investigative results.

Floorplan & Aerials

Turn-key Office Space



Duemelands Commercial Real Estate
 301 E. Thayer Avenue - Bismarck, ND 58501
 Phone: (701) 221-2222
www.duemelands.com

Jill Duemeland, CCIM
 CEO & President
 Phone: 701.221.9033
jill@duemelands.com

April Eide, CCIM
 Vice President of Brokerage
 Direct: 701.223.5863
april@duemelands.com